

# GLADES PLAZA

2200-2300 Glades Road & 2240 NW 19th Street, Boca Raton, FL 33431





BOCA RATON, FL

# GLADES PLAZA

2200-2300 Glades Road & 2240 NW 19th Street, Boca Raton, FL 33431



For information: **Karl Brinkman**

E: [kbrinkman@sterlingorganization.com](mailto:kbrinkman@sterlingorganization.com)

P: 855-912-7090

October 2024



BOCA RATON, FL

# GLADES PLAZA

## LEASING PLAN

2200-2300 Glades Rd. & 2240 NW 19th St.  
Boca Raton, FL 33431

< Traffic light at Butts Road

Interstate-95 (205,000 cars per day) >

Glades Road (62,000 cars per day)

Butts Road (7,000 cars per day)

Renaissance Way

NW 19th Street

WEST - THE COMMONS AT TOWN CENTER - EAST

- N
- ± 23.3 acres
- pylon
- 2nd Generation Restaurant Space

Property Border

TOWN CENTER AT BOCA RATON

For information:  
**Karl Brinkman**

E: [kbrinkman@sterlingorganization.com](mailto:kbrinkman@sterlingorganization.com)  
P: 855-912-7090



The plan and its contents are furnished for informational purposes only and are intended only as a general description (but not represented, covenanted or warranted). The size and location of the project, the identity or nature of any occupant and all features, matters and other information included herein are subject to change without notice and should not be relied upon by any party. No representation or warranty, express or implied, is made as to the accuracy or reliability of this plan or its contents.

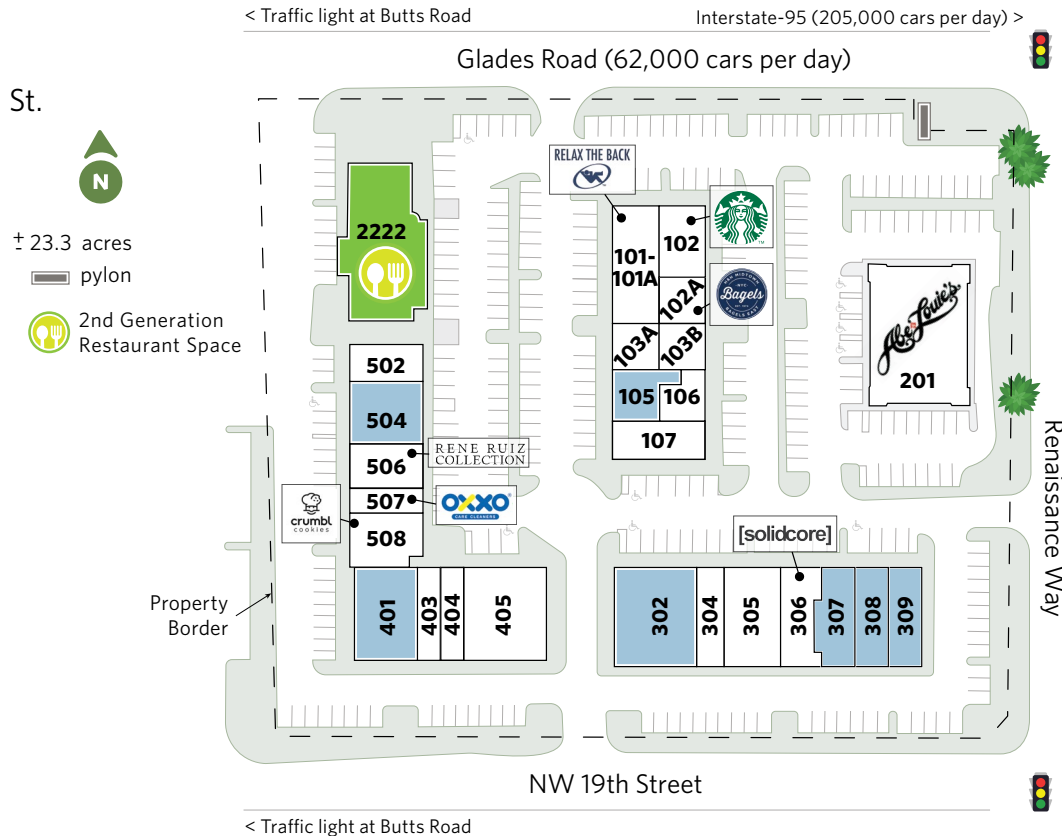


# GLADES PLAZA

## LEASING PLAN

2200-2300 Glades Rd. & 2240 NW 19th St.

Boca Raton, FL 33431



**For information:**

**Karl Brinkman**

E: kbrinkman@sterlingorganization.com

P: 855-912-7090

UNIT	RETAIL TENANT	SQ. FT.	UNIT	RETAIL TENANT	SQ. FT.	UNIT	RETAIL TENANT	SQ. FT.	UNIT	RETAIL TENANT	SQ. FT.
<b>GLADES PLAZA</b>			<b>GLADES PLAZA</b>			<b>GLADES PLAZA</b>			<b>GLADES PLAZA</b>		
101-101A	Relax the Back	3,116	107	De Leon Hair Salon	1,990	<b>307</b>	<b>Available</b>	<b>1,877</b>	502	LaSpada's Hoagie Cafe	1,600
102A	H&H Bagels	1,226	201	Abe & Louie's	7,457	<b>308</b>	<b>Available</b>	<b>2,082</b>	<b>504</b>	<b>Available</b>	<b>3,121</b>
102	Starbucks	2,000	<b>302</b>	<b>Available</b>	<b>4,931</b>	<b>309</b>	<b>Available</b>	<b>2,449</b>	506	Rene Ruiz	2,045
103A	Fitlife Foods	1,137	304	SIA Specialty Infusion and Wellness Spa	1,339	<b>401</b>	<b>Available</b>	<b>3,881</b>	507	OXXO Care Cleaner	1,095
103B	Closet Full of Linens	1,078	305	Ideal Image	3,039	403	Raw Juice	1,363	508	Crumbl Cookies	1,498
<b>105</b>	<b>Available</b>	<b>1,858</b>	306	Solidcore	1,863	404	Man Cave (Coming Soon)	1,323	<b>2222</b>	<b>Available</b>	<b>7,091</b>
106	Holistic Nails	1,325	405	Flying Lizard	4,025				<b>Glades Plaza Total Square Feet: 65,809</b>		

# GLADES TWIN PLAZA LEASING PLAN

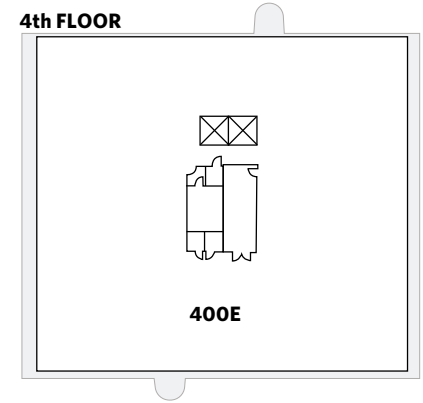
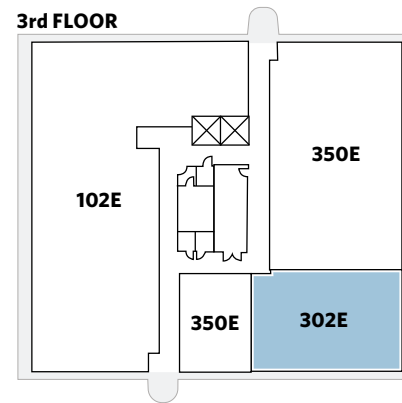
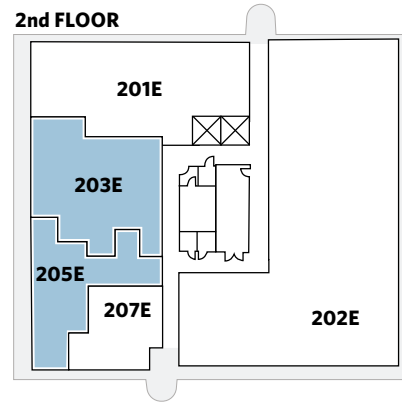
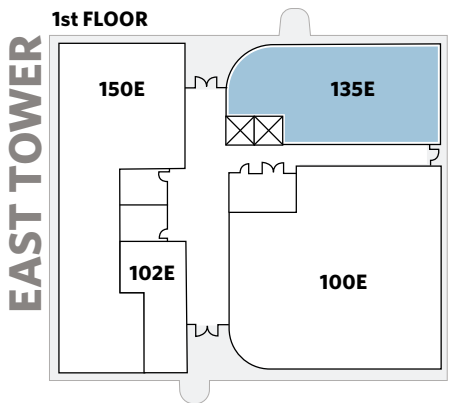
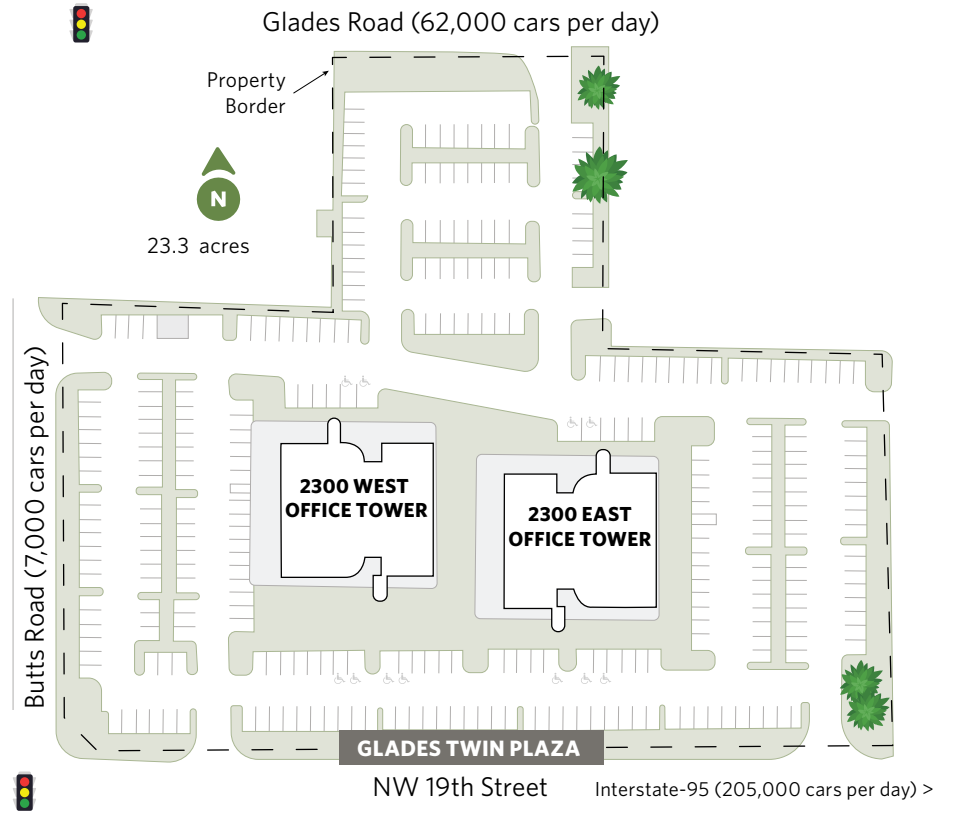
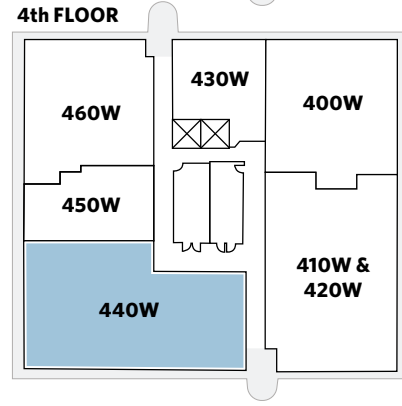
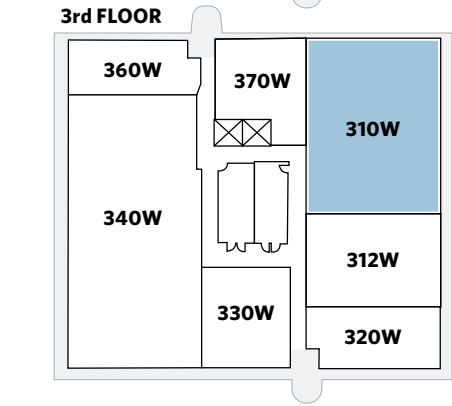
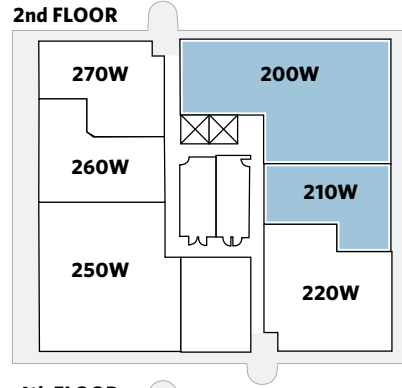
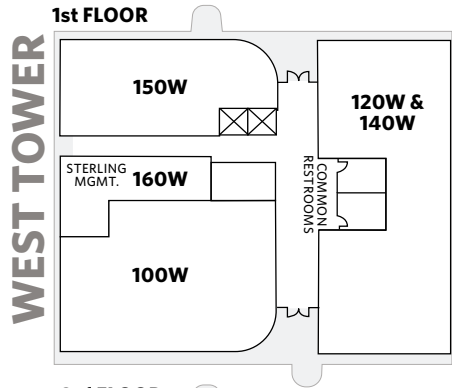
2200-2300 Glades Rd. & 2240 NW 19th St., Boca Raton, FL 33431

For information:

**Karl Brinkman**

E: kbrinkman@sterlingorganization.com

P: 855-912-7090



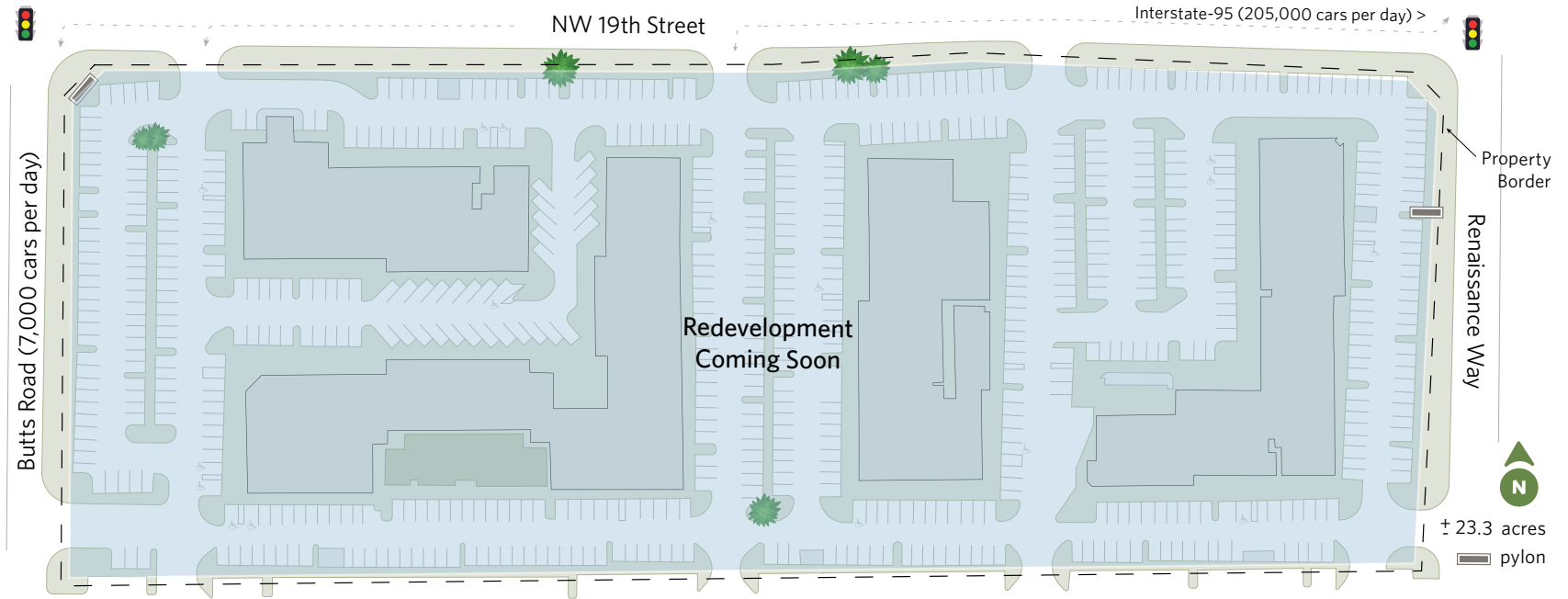
# COMMONS AT TOWN CENTER LEASING PLAN

2200-2300 Glades Rd. & 2240 NW 19th St.  
Boca Raton, FL 33431

For information:

**Karl Brinkman**

E: kbrinkman@sterlingorganization.com  
P: 855-912-7090



UNIT	RETAIL TENANT	SQ. FT.
<b>THE COMMONS AT TOWN CENTER - WEST</b>		
601	Barbara Katz Sportswear Co.	9,368
604	Yoga Journey	3,304
<b>609</b>	<b>Available</b>	<b>1,467</b>
<b>611</b>	<b>Available</b>	<b>1,990</b>
<b>613</b>	<b>Available</b>	<b>4,404</b>
614	LaSpada's Hoagie Cafe	1,368

UNIT	RETAIL TENANT	SQ. FT.
<b>THE COMMONS AT TOWN CENTER - WEST</b>		
700	Toojay's	5,300
<b>701</b>	<b>Available</b>	<b>4,450</b>
<b>703</b>	<b>Available</b>	<b>9,822</b>
<b>800A</b>	<b>Available</b>	<b>4,000</b>
<b>800B</b>	<b>Available</b>	<b>11,384</b>
<b>807</b>	<b>Available</b>	<b>5,861</b>

**The Commons at Town Center - WEST**  
**Total Square Feet: 62,718**

UNIT	RETAIL TENANT	SQ. FT.
<b>THE COMMONS AT TOWN CENTER - EAST</b>		
900	Five Guys	2,694
<b>901</b>	<b>Available</b>	<b>2,577</b>
904	Nicks New Haven Pizza	4,747
<b>907</b>	<b>Available</b>	<b>1,235</b>
<b>908-911</b>	<b>Available</b>	<b>4,570</b>
<b>912</b>	<b>Available</b>	<b>1,951</b>
<b>913</b>	<b>Available</b>	<b>1,008</b>
914.916	Casa de Montecristo	4,557
<b>915</b>	<b>Available</b>	<b>3,263</b>
<b>1101</b>	<b>Available</b>	<b>1,730</b>
<b>1101A</b>	<b>Available</b>	<b>5,500</b>
<b>1101B</b>	<b>Available</b>	<b>1,656</b>

UNIT	RETAIL TENANT	SQ. FT.
<b>THE COMMONS AT TOWN CENTER - EAST</b>		
<b>1101C</b>	<b>Available</b>	<b>500</b>
<b>1102</b>	<b>Available</b>	<b>3,000</b>
1103	Salon Chenzo	2,258
<b>1200</b>	<b>Available</b>	<b>2,944</b>
1200B	Moe's Southwest Grill	2,504
<b>1201</b>	<b>Available</b>	<b>3,168</b>
<b>1203</b>	<b>Available</b>	<b>1,242</b>
<b>1204</b>	<b>Available</b>	<b>1,238</b>
<b>1205</b>	<b>Available</b>	<b>1,235</b>
1206	Man Cave	1,500

**The Commons at Town Center - EAST**  
**Total Square Feet: 55,077**

# GLADES PLAZA LEASING PLAN

2200-2300 Glades Rd. & 2240 NW 19th St., Boca Raton, FL 33431

UNIT	OFFICE TENANT	SQ. FT.
<b>GLADES TWIN PLAZA - WEST OFFICE TOWER</b>		
100-140W	Seacoast National Bank	6,835
150W	PrimeLending	1,852
160W	Mgmt. Office	-
<b>200W</b>	<b>Available</b>	<b>3,437</b>
<b>210W</b>	<b>Available</b>	<b>1,340</b>
220W	F&V Capital Management	2,020
230W	First Alliance Group	950
250W	Alliant Insurance	2,694
260W	Sentinel Private Wealth	1,499
270W	Paul Ghougasian, P.A.	1,600
<b>310W</b>	<b>Available</b>	<b>2,419</b>
312W	CaseClients	1,502
320W	CB Recovery Group	1,735
330W	Priscila Iwama Medical and Cosmetic Dermopigmentation	1,117
340W	Lydecker Diaz	4,650
360W	USGB Enterprises	921
370W	Lydecker Diaz	1,090
400-420W	Wrathell, Hunt & Associates	5,884
430W	JB Law	800
<b>440W</b>	<b>Available</b>	<b>3,296</b>
450W	Wrathell Hunt & Associates	1,079
460W	Wrathell Hunt & Associates	2,381

UNIT	OFFICE TENANT	SQ. FT.
<b>GLADES TWIN PLAZA - EAST OFFICE TOWER</b>		
100E	Cutiscare	3,993
102E	Deluxe Financial	5,558
<b>135E</b>	<b>Available</b>	<b>1,885</b>
150E	NuLife Institute	2,399
201E	Gastro Health	2,694
202E	ISO Management	6,639
<b>203E</b>	<b>Available</b>	<b>1,506</b>
<b>205E</b>	<b>Available</b>	<b>1,148</b>
207E	Garber & Garber, CPAs, P.A.	819
<b>302E</b>	<b>Available</b>	<b>1,854</b>
350E	Anxiety Institute	6,775
400E	Torticity	13,455
<b>Total Office Square Feet:</b>		<b>97,826</b>

UNIT	RETAIL TENANT	SQ. FT.
<b>GLADES PLAZA</b>		
101-101A	Relax the Back	3,116
102A	H&H Bagels	1,226
102	Starbucks	2,000
103A	Fitlife Foods	1,137
103B	Closet Full of Linens	1,078
<b>105</b>	<b>Available</b>	<b>1,858</b>
106	Holistic Nails	1,325
107	De Leon Hair Salon	1,990
201	Abe & Louie's	7,457
<b>302</b>	<b>Available</b>	<b>4,931</b>
304	SIA Specialty Infusion and Wellness Spa	1,339
305	Ideal Image	3,039
306	Solidcore	1,863

UNIT	RETAIL TENANT	SQ. FT.
<b>GLADES PLAZA</b>		
<b>307</b>	<b>Available</b>	<b>1,877</b>
<b>308</b>	<b>Available</b>	<b>2,082</b>
<b>309</b>	<b>Available</b>	<b>2,449</b>
<b>401</b>	<b>Available</b>	<b>3,881</b>
403	Raw Juice	1,363
404	Man Cave (Coming Soon)	1,323
405	Flying Lizard	4,025
502	LaSpada's Hoagie Cafe	1,600
<b>504</b>	<b>Available</b>	<b>3,121</b>
506	Rene Ruiz	2,045
507	OXXO Care Cleaner	1,095
508	Crumb! Cookies	1,498
<b>2222</b>	<b>Available</b>	<b>7,091</b>

**Glades Plaza Total Square Feet: 65,809**

UNIT	RETAIL TENANT	SQ. FT.
<b>THE COMMONS AT TOWN CENTER - WEST</b>		
601	Barbara Katz Sportswear Co.	9,368
604	Yoga Journey	3,304
<b>609</b>	<b>Available</b>	<b>1,467</b>
<b>611</b>	<b>Available</b>	<b>1,990</b>
<b>613</b>	<b>Available</b>	<b>4,404</b>
614	LaSpada's Hoagie Cafe	1,368
700	TooJay's	5,300
<b>701</b>	<b>Available</b>	<b>4,450</b>
<b>703</b>	<b>Available</b>	<b>9,822</b>
<b>800A</b>	<b>Available</b>	<b>4,000</b>
<b>800B</b>	<b>Available</b>	<b>11,384</b>
<b>807</b>	<b>Available</b>	<b>5,861</b>

**The Commons at Town Center West - Total Square Feet: 62,718**

UNIT	RETAIL TENANT	SQ. FT.
<b>THE COMMONS AT TOWN CENTER - EAST</b>		
900	Five Guys	2,694
<b>901</b>	<b>Available</b>	<b>2,577</b>
904	Nicks New Haven Pizza	4,747
<b>907</b>	<b>Available</b>	<b>1,235</b>
<b>908-911</b>	<b>Available</b>	<b>4,570</b>
<b>912</b>	<b>Available</b>	<b>1,951</b>
<b>913</b>	<b>Available</b>	<b>1,008</b>
914.916	Casa de Montecristo	4,557
<b>915</b>	<b>Available</b>	<b>3,263</b>
<b>1101</b>	<b>Available</b>	<b>1,730</b>
<b>1101A</b>	<b>Available</b>	<b>5,500</b>
<b>1101B</b>	<b>Available</b>	<b>1,656</b>
<b>1101C</b>	<b>Available</b>	<b>500</b>
<b>1102</b>	<b>Available</b>	<b>3,000</b>
1103	Salon Chenzo	2,258
<b>1200</b>	<b>Available</b>	<b>2,944</b>
1200B	Moe's Southwest Grill	2,504
<b>1201</b>	<b>Available</b>	<b>3,168</b>
<b>1203</b>	<b>Available</b>	<b>1,242</b>
<b>1204</b>	<b>Available</b>	<b>1,238</b>
<b>1205</b>	<b>Available</b>	<b>1,235</b>
1206	Man Cave	1,500

**The Commons at Town Center East - Total Square Feet: 55,077**

**Total Retail Square Feet: 183,552**  
**Total Square Feet: 281,378**

**For information:**

**Karl Brinkman**

E: kbrinkman@sterlingorganization.com  
P: 855-912-7090

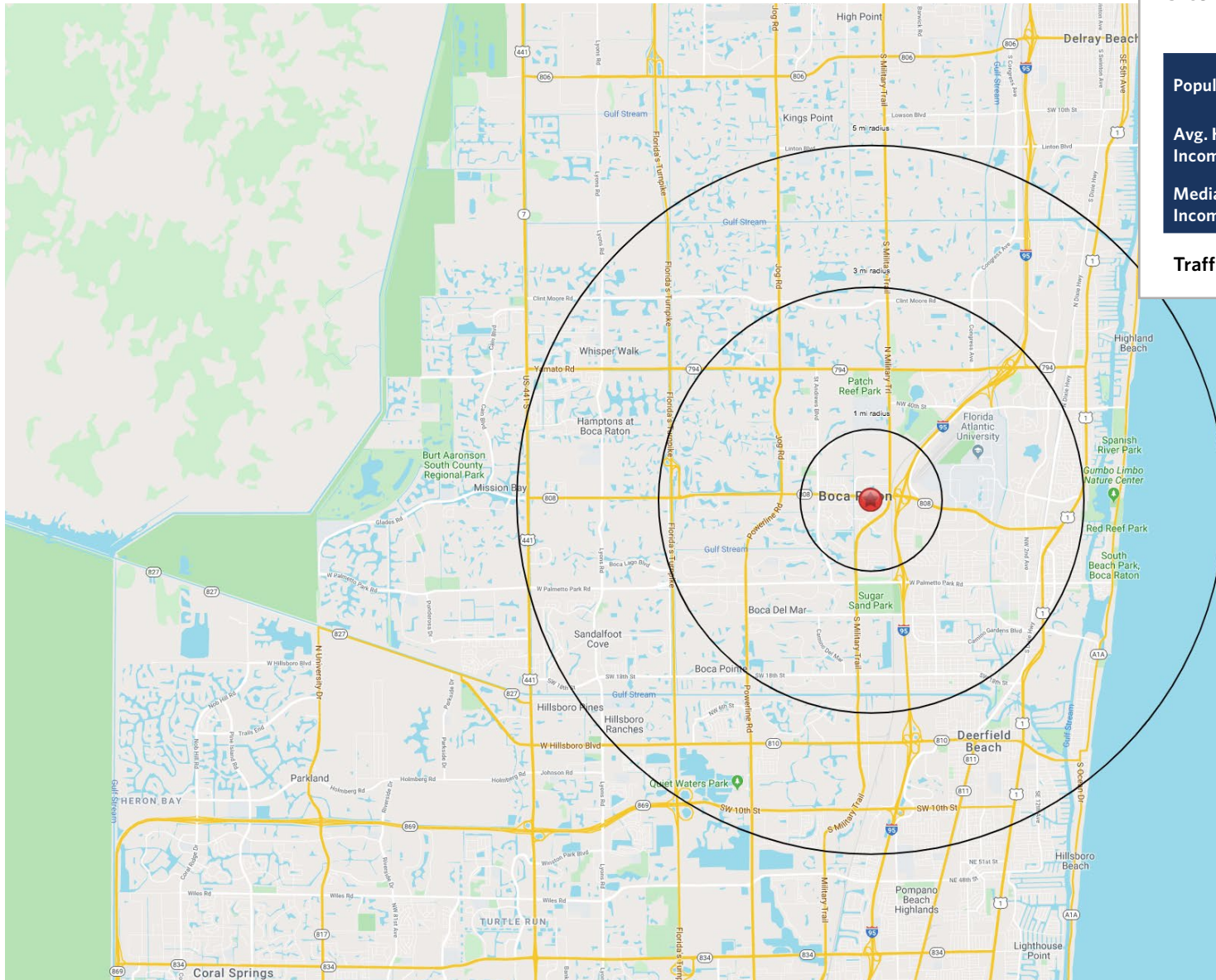


The plan and its contents are furnished for informational purposes only and are intended only as a general description (but not represented, covenanted or warranted). The size and location of the project, the identity or nature of any occupant and all features, matters and other information included herein are subject to change without notice and should not be relied upon by any party. No representation or warranty, express or implied, is made as to the accuracy or reliability of this plan or its contents.



# GLADES PLAZA

2200-2300 Glades Rd. & 2240 NW 19th St., Boca Raton, FL 33431



## Site Demographics (2024)

	1 Mile	3 Mile	5 Mile
<b>Population:</b>	8,122	97,546	265,222
<b>Avg. HH Income:</b>	\$138,075	\$148,859	\$131,977
<b>Median HH Income:</b>	\$103,928	\$103,355	\$91,293
<b>Traffic Count:</b>	274,000 cars/day		



# GLADES PLAZA

2200-2300 Glades Rd. & 2240 NW 19th St., Boca Raton, FL 33431

